

# 2019 ANNUAL REPORT

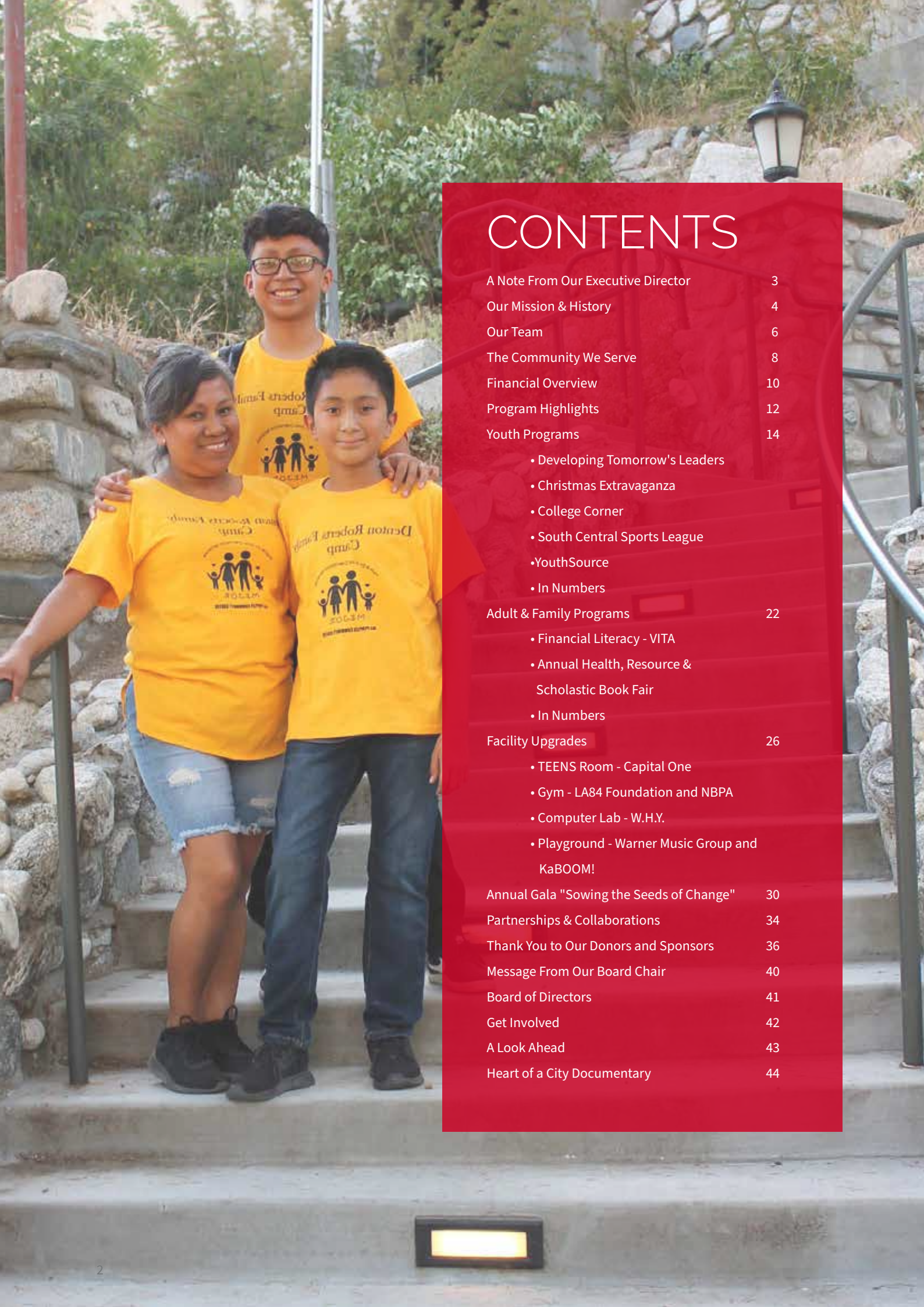


Real Solutions. Real Heart.  
Real Service to South LA Since 1942.



**ALL PEOPLES**  
COMMUNITY CENTER





# CONTENTS

A Note From Our Executive Director	3
Our Mission & History	4
Our Team	6
The Community We Serve	8
Financial Overview	10
Program Highlights	12
Youth Programs	14
• Developing Tomorrow's Leaders	
• Christmas Extravaganza	
• College Corner	
• South Central Sports League	
• YouthSource	
• In Numbers	
Adult & Family Programs	22
• Financial Literacy - VITA	
• Annual Health, Resource & Scholastic Book Fair	
• In Numbers	
Facility Upgrades	26
• TEENS Room - Capital One	
• Gym - LA84 Foundation and NBPA	
• Computer Lab - W.H.Y.	
• Playground - Warner Music Group and KaBOOM!	
Annual Gala "Sowing the Seeds of Change"	30
Partnerships & Collaborations	34
Thank You to Our Donors and Sponsors	36
Message From Our Board Chair	40
Board of Directors	41
Get Involved	42
A Look Ahead	43
Heart of a City Documentary	44

# A NOTE FROM OUR EXECUTIVE DIRECTOR



**Sandra Bryant**  
*Executive Director*

Dear Supporters,

2019 has proved to be an exciting year for All Peoples Community Center. We have accomplished many of the upgrades to the facility. The generous support of foundations and volunteer efforts from community members and corporate volunteers has enhanced our youth programs with the gym, new computer lab, and playground upgrade. We are on the path to fulfilling our objective to become more energy efficient with the installment of LED lighting and partial replacement of the HVAC system. These efforts were guided by our goals within the strategic plan adopted by our Board of Directors in 2015.

We will continue to pursue these goals in 2020.

Our FamilySource Center continues to respond to our residents' emerging needs with financial literacy workshops, free tax preparation services, and other activities to help families increase their income. In the 2018-2019 period we exceeded our goal of \$500,000 generating a \$1,239,992 increase in income. In our partnership with the Coalition for Responsible Community Development (CRCD), we provided a series of small business entrepreneurial classes for community members.

Our young people always inspire me, and this year is no different. The youth who graduated and were the first in their families to attend college are our community's role models. In this report, you will hear in their own words the impact of achieving their goal. The Geraldine Morgan Scholarship fund's establishment to support 4 young people was one of the highlights of our annual Gala. From personal experience, I know what a sense of pride you feel when you are

the first to complete a college education.

I appreciate the support of our Board of Directors, who provide our organization's oversight and governance. Our fiscal health has steadily increased over the past five years. We continue to maintain appropriate management to program ratio of 17% Administrative expenses. Our audit and 990 are available to the public for review on Guidestar and our web site.

Finally, I want to thank our donors who entrusted us with your precious resources over the years, which has enabled us to serve the community better. Our success is possible because of your generosity, and on behalf of the Board of Directors, our staff, and most importantly the community members, **THANK YOU.**

Sincerely,  
Sandra Bryant



THE YOUTH WHO GRADUATED AND WERE THE FIRST IN THEIR FAMILIES TO ATTEND COLLEGE ARE OUR COMMUNITY'S ROLE MODELS.

- SAUNDRA BRYANT



# MISSION STATEMENT

All Peoples Community Center is an all-encompassing neighborhood center whose mission is to provide social services and programs that empower individuals and promote community, respect and self-determination for all.

# OUR HISTORY

Founded in 1942, All Peoples has served as a true safe haven for low-income children, youth, and families in South LA for 78 years.

All Peoples serves more than 6,000 people per year in its 20,000-square-foot center located in South LA's Vernon-Central neighborhood, immediately south of downtown LA.

**6000+** LIVES SERVED PER YEAR IN OUR  
20,000 SQUARE FOOT CENTER

Started prior to the Civil Rights Movement of the 1950s-60s, All Peoples Community Center was a revolutionary concept as described in the organization's 2008 Strategic Plan: "All Peoples is a non-profit, non-sectarian community center located in the very spot where it was originally founded in 1942 – in South Los Angeles. All Peoples has made incredible strides since it was first envisioned... as a place in the inner-city where people from all ethnicities, races, and religions could unite under one roof to share a vision for a stronger, more self-reliant community and to help turn the dreams of struggling local youth & adults into reality. At a time when de facto and de jure segregation were still an everyday reality in Los Angeles, the establishment of All Peoples, a multi-ethnic and multi-racial community center, was not just path-breaking, it was revolutionary."



In 2016, All Peoples became a city-funded FamilySource Center which doubled our annual revenue and fueled programmatic growth. Today, All Peoples is a vibrant hub of activity for children, youth, and families six days a week, year-round.



**PROUDLY SERVING THE SOUTH LOS ANGELES  
COMMUNITY FOR OVER 78 YEARS**



# OUR TEAM

## A STAFF THAT LIVES AND BREATHE THE COMMUNITY THEY SERVE

All Peoples' staff reflects the community it serves. Among staff at All Peoples, 89% are Latino, 11% are Black, 84% speak Spanish and 62% are South LA residents. The staff is dedicated to our South Los Angeles Vernon-Central Community and our mission to empower our community members.



### ADMINISTRATION

**Genesis Ramos**  
Accounting Assistant

**Saundra Bryant, LCSW**  
Executive Director

**Gemma Labaro**  
Accounting Assistant

**Shalanda Mays**  
Executive Assistant to Saundra Bryant

**Liliana Huerta**  
Receptionist

**Uzany Muteb**  
Accountant

**Arnulfo Marquez**  
Maintenance

### FAMILYSOURCE CENTER (FSC) / YOUTH PROGRAM

**Luz Nunez, MSW ASW 76878**  
Supervising Case Manager

**Julio-C Ramos, MSW**  
Director FSC

**Yessenia Villacorta, BSW**  
Case Manager

**Leticia Ortiz Gonzales, BSW**  
Program Coordinator

**Belginy Molina, BSW**  
Case Manager



WE ARE A TEAM THAT DEDICATES OUR TIME UPLIFTING FAMILIES SO THAT THEY ARE SELF-DETERMINED AND ENCOURAGED TO COMPLETE THEIR GOALS.

- YESSANIA VILLACORTA, BSW, CASE MANAGER

**David Perez**  
Youth Coordinator  
Casa Figueroa, Food Program Coordinator

**SPECIAL PROGRAMS**

**Angel Garcia, BS**  
WorkSource Career Coach

### RETIRED AND SENIOR VOLUNTEER PROGRAM

**Jennifer Santos, BSW**  
RSVP Director

**Natalie Delgado**  
MSW. Intern

**Stephanie Cruz**  
BSW Intern

**Karina Basurto**  
Youth Coordinator  
Dunbar Village

**Adrian Rios**  
YouthSource Case Manager

**Michelle Watson**  
RSVP Administrative Assistant

**William Moreno**  
Human Service

**Diana Parra**  
Youth Coordinator  
Washington 702

**Susana Palacios**  
Health Educator  
Saturday Coordinator

### INTERNS

**Jocelyn Reyes**  
BSW Intern

**Kristie Gonzalez, BSW**  
Case Manager

**Kimberly Benitez**  
Child Watch

**Elizabeth Martinez**  
College Advisor

**Victor Perez**  
Youth Coordinator  
Middle School

**Tania Lopez, BSW**  
Intake Supervisor

**Marytza Ramirez**  
Child Watch

**Susana Nieva**  
College Advisor

**Erick Moreno**  
Youth Coordinator  
High School

**Jose Palacios, MA**  
Data Intake Specialist /  
Computer Instructor

**Deisy Huerta, BS**  
Youth Director

**Davida Rosado**  
Youth Coordinator  
1st to 3rd Grade

**Sonia Pedroza**  
Youth Coordinator  
Adams and Central

**Reyna Murio-Varela**  
Data Intake Specialist

**Michelle Ordaz**  
Youth Coordinator

**Erika Gonzalez**  
Youth Coordinator  
4th & 5th Grade



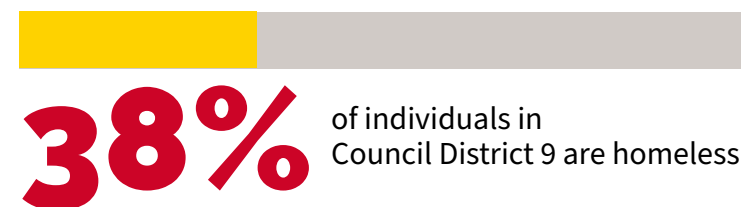
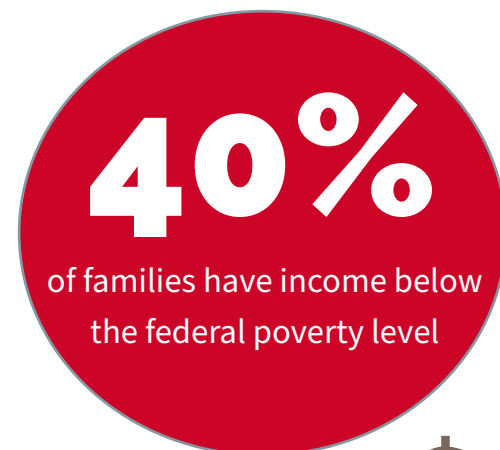
I HUMBLY LOOK UP TO THE HIGH SCHOOL STUDENTS BECAUSE MOST OF THEM ARE FIRST-GENERATION COLLEGE APPLICANTS AND FROM ECONOMICALLY DEPRIVED HOMES. THEY ARE COMMITTED!

- SUSANA NIEVA, COLLEGE ADVISOR

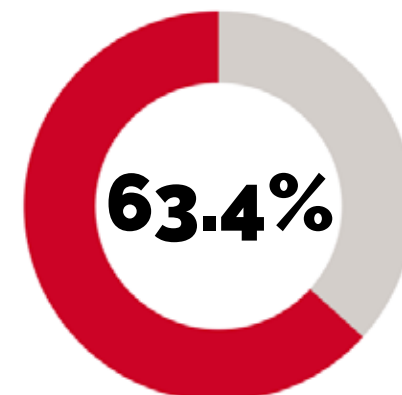


# THE COMMUNITY WE SERVE

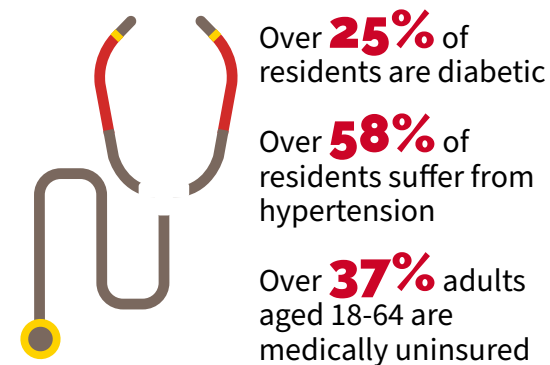
SOUTH LOS ANGELES REMAINS AMONG THE MOST DISADVANTAGED AND UNDER-SERVED COMMUNITIES IN THE NATION.



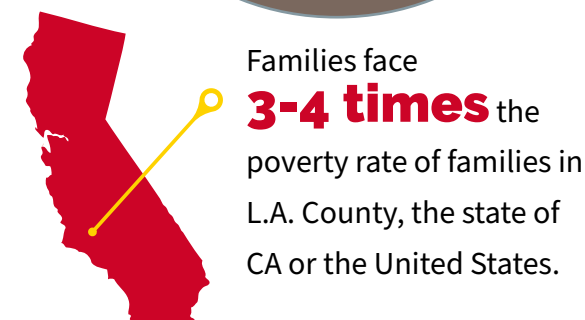
The median family income is **\$28,405**



Only **2%** of adults have a bachelor's degree



There are **1.4M+** food insecure people in South Los Angeles



In the All Peoples Service Area (primarily zip code 90011), the majority of residents (89.9%) identify as Latino (primarily Mexican), with Black being the next largest group at 8.3%. True to the neighborhood demographics, All Peoples is open to all residents and primarily serves low-income Latino families. According to internal data, 84% of individuals served by All Peoples are Latino and 100% are low-income.

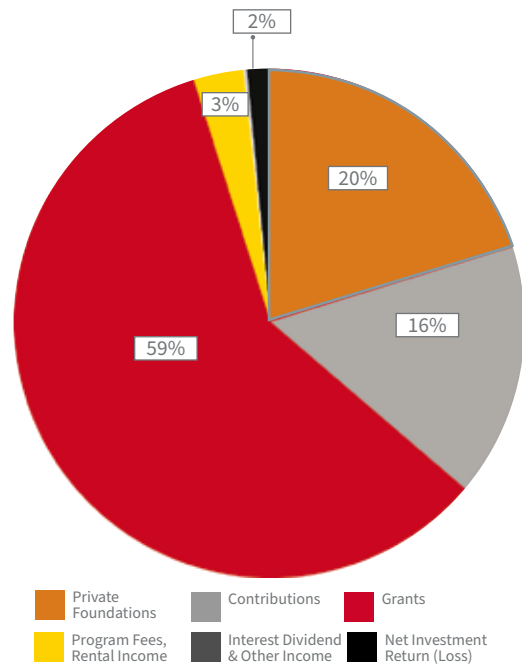
All Peoples provides a coordinated effort - all under one roof - to increase the financial stability of families, assist in youth academic achievement, and promote healthy lifestyles through sports & exercise, along with nutritious diet through our community garden.

Data sources: US Census, ACS, 2011-2015; Los Angeles Homeless Services Authority, 2019; Los Angeles Food Bank; LA County Department of Public Health, Office of Planning, Evaluation, and Development, Community Health Assessment; March 2015.

# FINANCIAL OVERVIEW

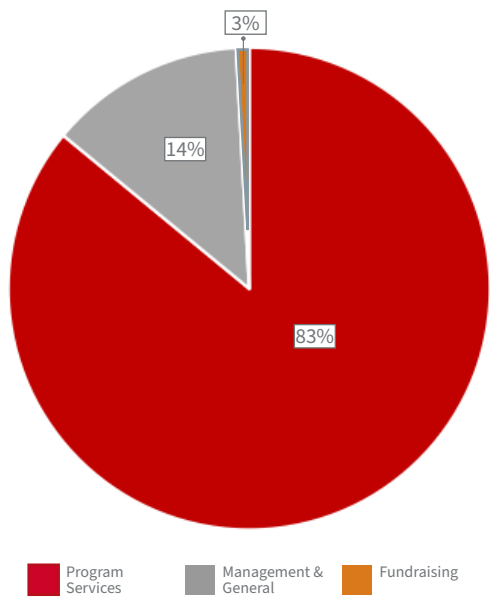
## STATEMENT OF ACTIVITIES

REVENUE, SUPPORT & GAINS			%
Private foundation		437,490	20%
Contributions		349,708	16%
Federal grants, grants, and contracts		1,276,337	59%
Program fees and rental income		69,885	3%
Interest and dividend income and other income		5,271	0.2%
Net investment return (loss)		32,335	2%
Net assets released from restrictions - endowment	9,034		
Net assets released from restrictions - other	231,172		
TOTAL REVENUE, SUPPORT & GAINS		2,171,026	



# \$ 2.1M+

IN REVENUE, SUPPORT AND GAINS FROM GRANTS, PRIVATE FOUNDATIONS AND MORE



EXPENSES		%
Program services	1,693,141	83%
Management and general	288,244	14%
Fundraising	50,885	3%
TOTAL EXPENSES	2,032,270	
Change in net assets	138,756	
Net assets, beginning of year	923,450	
NET ASSETS, END OF YEAR	1,062,206	

## ALL PEOPLES HAS BEEN GROWING AND EXPANDING AT A RAPID PACE

All Peoples is grateful for our corporate sponsors, foundations and individual donors who enable us to provide services to our South Los Angeles Community. With your help, we were able to provide a myriad of social and educational services to more than 6,600 people last year.

All Peoples has been growing and expanding at a rapid pace, and we want to emphasize our shared mission to protect the long-term health of this remarkable institution we are so privileged to serve. All Peoples' Board of Directors oversees the fiscal health of the organization. The Finance Committee reports to the Board of Directors at every bi-monthly Board meeting, and a complete report of the agency's finances (including its endowment and trust funds) are sent annually to all officers of the Board. An external audit is also completed once a year.

Corporate sponsors, foundations and individual donors are able to review our audited financial statements and 990 tax forms at:

[WWW.ALLPEOPLES.CC.ORG/ABOUT-US/FISCAL-RESPONSIBILITY](http://WWW.ALLPEOPLES.CC.ORG/ABOUT-US/FISCAL-RESPONSIBILITY)

Thank you for entrusting us to proudly serve our South Los Angeles Community with **Real Solutions, Real Heart, and Real Service.**

## STATEMENT OF FINANCIAL POSITION

CURRENT ASSETS	
Cash and cash equivalents	312,290
Short-term investments	35,645
Contracts receivable, net of allowance	216,143
Other receivables	9,034
Prepaid expenses and other current assets	17,413
TOTAL CURRENT ASSETS	590,525

Property and equipment, net	299,954
Long-term investments	252,420
TOTAL ASSETS	1,142,899

LIABILITIES	
Accounts payable	4,506
Accrued expenses	45,865
Short-term debts	11,651
Current maturity of capital lease obligation	4,074
Capital lease obligation, less current maturity	14,597
TOTAL LIABILITIES	80,693

NET ASSETS	
Designated by the Board for operating	504,509
Designated by the Board for endowment	85,283
Invested in property and equipment, net of related debt	269,632
TOTAL WITHOUT DONOR RESTRICTIONS	859,424
Perpetual in nature	202,782
Underwater endowments	0.00
TOTAL WITH DONOR RESTRICTIONS	202,782
TOTAL NET ASSETS	1,062,206



# PROGRAM HIGHLIGHTS

One of the city's oldest and most trusted place-based community organizations, All Peoples Community Center provides social services and programs throughout the year in South Los Angeles to empower individuals and promote community, respect, and self determination for all.



All Peoples held our **Annual Staff Retreat** to focus on team building, training exercises, and program planning for the year. Staff toured the South Central community to gain a better understanding of current community needs.



Through our **Internship Program**, college students had the opportunity to have practical experience to supplement theory from the classroom, while also allowing us to expand our services to the community.



During our **Annual Easter Carnival**, sponsored by Toyota Financial Services, staff gave away 300 Easter baskets to attendees.



YouthSource completed their 2-week **FamilySource Financial Literacy Workshop** series led by Capital One Advisors that was designed to enhance financial wellness by preparing students on proper financial management culminating with a field trip to open their own savings accounts.

JAN FEB MAR APR MAY JUN



All Peoples hosted **Pedestrian and Bicycle Safety Workshops** in collaboration with the City of Los Angeles Office of Traffic Safety Housing and Community Investment Department and conducted safety walks throughout South LA.



Our YouthSource participants Jose Peralta and Shadia Gamble were selected for the **2019 BET Experience Youth Program** hosted by AEG where they learned about careers in the music and entertainment industry, sat in on an industry panel featuring singer-songwriter and producer Robin Thicke and attended the BET Awards.



In partnership with Los Angeles Trade Technical College, **FamilySource ESL Classes** were held throughout the year with a total of 123 registered individuals.



Our **47th Annual Retired and Senior Volunteer Program Luncheon** was held to thank our RSVP members for their continued dedication to our South LA community.



**M.E.J.O.R.'s Leadership Group - Denton Roberts Family Camp**, with a focus on family strength and unity, was held at the Loch Leven Camp and Conference Center in the San Bernardino Mountains with 52 participants.



The **15th Annual Don Shelton Memorial Golf Classic** charity golf tournament was held at the San Dimas Canyon Golf Club sponsored by the Christian Church Disciples of Christ Pacific Southwest Region's Golf Committee. Proceeds from the golf tournament included All Peoples.



**CARECEN**, our FSC collaborative partner, provided legal consultations to 835 clients. This included U-Visas, Residency, Citizenship, Secure Right to Work, Legal Consultations and other immigration legal services.

JUL AUG SEP OCT NOV DEC



During our **Annual Back-to-School Night**, 309 youth received backpacks and school supplies for the upcoming school year.



All Peoples **Annual Community Thanksgiving Dinner** provided a hot meal to over 900 community members.

# YOUTH PROGRAMS

## DEVELOPING "TOMORROW'S LEADERS"

All Peoples currently serves over 3,500 youth annually with our youth and community programs. All Peoples' After-School "Tomorrow's Leaders" Program, serving grades 1 to 12, was developed in order to help increase the graduation rates of low income South Los Angeles high school students and prepare them for a post-secondary education and career. Youth Programs are designed to provide a safe space for our youth to grow.

Over **100** youth participated in the "Tomorrow's Leaders" After-School Program

### YOUTH PROGRAMS AND ACTIVITIES LIST

- Extended Day Child Care
- "Tomorrow's Leaders" After-School Program
- "Urban Adventures" Summer Day Camp
- Camp Joe Ide
- Annual Back to School Night
- FamilySource College Corner
- Geraldine Morgan Scholarship Fund
- YouthSource
- Youth Financial Literacy
- Annual Easter Carnival
- Annual Christmas Toy Giveaway
- Annual Halloween Festival
- Youth Career Night
- One-on-One Tutoring
- Youth Civic Engagement
- Summer Youth Employment
- Tutoring Program Assistant Internship
- South Central Sports League
- Senior Graduation Packets



EVER SINCE MY LAKER DAYS I'VE BEEN SERVING THE COMMUNITY IN DIFFERENT WAYS...COOKIE AND I GET SO MUCH JOY BLESSING OTHERS AND GIVING BACK TO THE COMMUNITY. THANK YOU TO OUR INCREDIBLE PARTNERS MATTEL, ALBERTSONS AND WALMART FOR THEIR SUPPORT.

- EARVIN "MAGIC" JOHNSON



## CHRISTMAS EXTRAVAGANZA

Earvin "Magic" and Cookie Johnson hosted our Annual Christmas Toy Giveaway. Over 300 children were selected to receive bikes provided by Mr. and Mrs. Johnson and toys donated by Mattel. Attendees and their families enjoyed carnival games, face painting, photos with Santa, and food provided by Albertsons.

Over **300** youth received bicycles this year

"Ever since my Laker days I've been serving the community in different ways...Cookie and I get so much joy blessing others and giving back to the community. Thank you to our incredible partners Mattel, Albertsons and Walmart for their support." - Earvin "Magic" Johnson

"We are grateful to Magic and all of the partners for providing our youth with an incredible Christmas! It will be a holiday remembered for many years to come." - Sandra Bryant

Thank you to Magic Johnson Enterprises, Mattel, Walmart, Albertsons, LA Hosts Lions Club, UPROXX and all of our volunteers for an incredible night for our youth and families!



## SUMMER CAMPS

"Urban Adventures" Summer Day Camp was held for 80 youth entering 2nd to 8th grade. All Peoples Staff made sure that there was lots of fun and laughter during camp, while still accomplishing our overall goal for campers, which is to sustain or increase youth reading and math levels over the summer. Camp Joe Ide was held at the Loch Leven Camp and Conference Center in the San Bernardino Mountains. 60 campers, ages 8-12, enjoyed swimming, archery, arts & crafts, hiking and more!

Over **75** youth attended "Urban Adventures" Summer Day Camp and Camp Joe Ide



# YOUTH PROGRAMS CONTINUED

## COLLEGE CORNER

Our College Advisors work closely with all youth, elementary to high school, to make sure that every one knows that “College is Possible” regardless of their socio-economic status.

College Advisors conduct workshops and one-on-one sessions with high school youth to review transcripts, college admissions, academic requirements and scholarship opportunities that align with the youth’s goals and aspirations. During these sessions, College Advisors and youth conduct career options, salary, and college research based on the youth’s likes and interests, and develop and implement a college plan and possible career path.

Over **100** youth participated in college tours

College Advisors assist with mandated college or youth employment program testing, including CASAS, SAT and ACT. College Advisors also assist with financial aid and college application forms, and schedule college tours for youth and parents to attend..

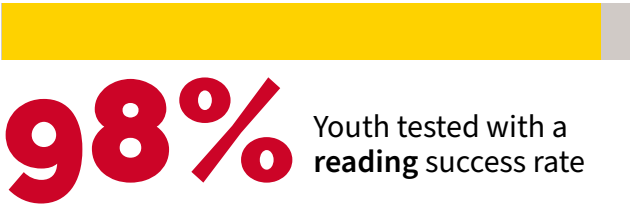
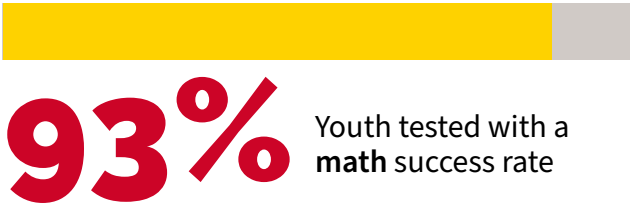


All Peoples FamilySource, in collaboration with the Los Angeles Unified School District’s Pupil Service and Attendance counselor, provide Parent College Workshops so that both youth and parents can share a common goal and understand the required steps for the college path.

## COLLEGE CORNER: CLIPPERS NON-PROFIT OF THE GAME



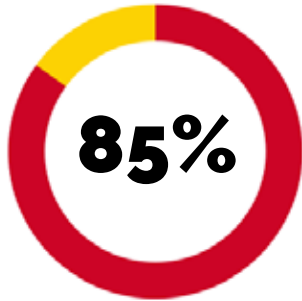
The Los Angeles Clippers recognized All Peoples during a basketball game at Staples Center. The Clippers celebrated the accomplishments of All Peoples and gave on-court recognition to some of our incredible College Corner youth. All Peoples raised funds during the game for our **Geraldine Morgan Scholarship Fund** to help youth go to College.



Over **65** youth and parents attended Youth Career Night

FamilySource College Advisors helped secure over **\$200K** in FAFSA financial aid

On average, College Advisors help students submit over **50** CSU applications, **30** UC applications and **20** community college applications yearly



Youth successfully entered private schools, community colleges, four-year universities or vocational colleges



# YOUTH PROGRAMS CONTINUED

## SOUTH CENTRAL SPORTS LEAGUE



To encourage and promote physical activity and teamwork, All Peoples offers an onsite year-round sports program called the South Central Sports League. The League offers soccer, basketball, flag football and volleyball for over 1,000 low-income South Los Angeles youth throughout the year. All youth basketball and volleyball are hosted at the All Peoples Gymnasium. The league consists of twelve nonprofits.

Over **1,000** youth participated in South Central Sports League through **12** nonprofits

“The South Central Sports League is a perfect demonstration of how much potential each kid has and the confidence that they gain through sports. I love to watch our kids succeed in sports, and we’re hoping to give them the structure and opportunity to develop their natural talents into a professional sports level.” - David Perez, Assistant Sports Director

All Peoples would like to acknowledge and thank Mike Wells for his generous donation of new Soccer, Volleyball and Basketball uniforms for our youth sports programs! Go All Peoples Seahawks!



Over **300** youth received backpacks and back-to-school supplies

**80** children attended our child care

Over **300** youth received Easter baskets during Annual Easter Carnival

## YOUTHSOURCE: CAREER NIGHT

YouthSource Staff hosted our Annual Career Night for all youth, 1st – 12th grade. Board members, corporate sponsors, and community leaders engage with youth to give them an opportunity to explore what careers they might be interested in pursuing. Professional participants also have the ability to create internships for high school senior attendees.



## YOUTHSOURCE: DRESS FOR SUCCESS

YouthSource Staff hosted a professional attire workshop so youth can understand the importance of appropriate work attire. Staff accompanied youth to local department stores to purchase business attire through a clothing stipend.



## YOUTHSOURCE: CIVIC ENGAGEMENT



A critical component of developing “Tomorrow’s Leaders” is establishing the habit of civic engagement at an early age. YouthSource participants attended CivicallyME, an interactive young voter candidate forum, with LA County Supervisor District 2 candidates. Youth were able to speak directly with the candidates and get the candidate’s political stance on key issues.



# YOUTH PROGRAMS CONTINUED



# VOICES OF OUR YOUTH



Thank you for all of the support that you all have given me throughout the years. I'm really grateful to be a part of the All Peoples community. You have given me a reason to keep pushing forward through college. Thank you for investing in my future.

- Miguel C.  
Geraldine Morgan Scholarship Recipient, currently attending UC Irvine



All Peoples has helped me with so much... from helping me finish my 12th grade year, to helping me fix my resume and finding work, to taking me on college tours, to helping me with financial literacy classes and much more. All Peoples has played a big part in me transitioning into college. They've also helped me with professional attire and hygiene kits. They go above and beyond.

- Sabrina P.  
High School Graduate, currently attending Santa Monica College



I appreciate all of the help I receive at All Peoples. Without your help through the Summer Youth Employment Program, I would be jobless.

- Jose P.  
Grade 11



I like coming to All Peoples because I get to spend time with my friends. I like to participate and help organize every fundraiser we do to accomplish certain goals. Of course, I focus on my homework too, and I know I can go to my youth coordinator for help.

- America B.  
Grade 10



During my YouthSource Internship at J2 Global, I met many great people with different skills. I learned more about computers than I expected to. This internship is bringing me one step closer to my dreams.

- Kevin G.  
High School Graduate



# ADULT & FAMILY PROGRAMS

## HELPING ADULTS AND FAMILIES OF SOUTH LOS ANGELES GAIN FINANCIAL STABILITY

All Peoples has focused its efforts in the areas of education, financial stability, and healthy living in an effort to help end the cycle of poverty for our families and communities.

### ADULT PROGRAMS AND ACTIVITIES

- All Peoples FamilySource Center
- Annual Health, Resource and Scholastic Book Fair
- Annual Community Thanksgiving Dinner
- Annual Christmas Adopt-a-Family and Toy Giveaway
- WorkSource Center
- Domestic Violence Support Group
- Supplemental Food Program
- Essential Access Health
- MEJOR (Mujer En Justa Organizacion Reciproca)
- Department of Children and Family Services Visitation Center
- Immigration Services
- RSVP (Retired and Senior Volunteer Program)
- Parenting Classes
- Anti-Recidivism Program
- Exercise Program

Over **3.5K** individuals served through our FamilySource Center



Families increased their income collectively by a combined total of over **\$2,700,000**



## FINANCIAL LITERACY - VITA

All Peoples' Financial Empowerment Program is packaged into a five-week mini-course consisting of 90-minute modules. Each week, financial experts teach topics from the FDIC Money Smart curriculum, which is designed to help enhance financial wellness of Low-to-Moderate Income (LMI) families. The

Money Smart curriculum contains the following topics: basic budgeting, understanding credit reports, the do's and don'ts of credit card usage, consumer's right and protection, saving and investment products, among other subjects.

479 federal and 479 state tax returns were filed at All Peoples VITA Tax Center for a combined total of **\$703,923** in refunds



All Peoples Community & FamilySource Center was an official Volunteer Income Tax Assistance Site (VITA) offering free tax preparation for the third year. All Peoples' VITA volunteers and staff prepared a total of 479 federal and state tax returns for a combined total of \$703,923 in refunds.

Over **800** individuals provided free legal consultations through our FSC collaborative partner CARECEN

Over **90** individuals signed up for FamilySource Citizenship Classes

Over **900** individuals enjoyed a hot meal for Thanksgiving

Over **3,600** individuals served through our Supplemental Food Program

A total of **175** seniors volunteered in our Retired and Senior Volunteer Program





# ADULT PROGRAMS CONTINUED

## ANNUAL HEALTH, RESOURCE & SCHOLASTIC BOOK FAIR

### PROVIDING OVER 1,000 COMMUNITY MEMBERS WITH HEALTH SERVICES AND RESOURCES

All Peoples has a long history of working to provide healthcare resources and services to South Los Angeles. For 22 years, All Peoples has hosted an annual Health, Resource and Scholastic Book Fair. Every spring, the fair features over 50 Agency Booths to provide free resources and screenings to attendees. Community members are able to receive free flu shots, mammograms, diabetes, cholesterol, glucose and blood pressure screenings, vision exams, HIV tests; dental screenings, and other health related issues.

Over **1,000** attended our Annual Health,  
Resource and Scholastic Book Fair

All Peoples has partnered with The L.A. Host Lions Club to conduct free vision screening during the health fair. On average, a total of 110 adults and youth are provided exams. Free reading glasses are provided for adults. Adults and youth are referred for further free evaluation to the Southern California College of Optometry as needed. During the week leading up to the fair, youth staff host a scholastic book fair offering a Buy 1 Get 1 Free special on all books. Over 1,000 community members attend the fair annually.





# FACILITY UPGRADES

Over the past three years, All Peoples' 20,000 square foot center has undergone massive renovations and upgrades to better serve the community.

- **JULY 2018:** Renovated Roof
- **JANUARY 2019:** Remodeled TEENS Room
- **MAY 2019:** New 6,000 square foot Community Garden
- **JUNE 2019:** New Playground
- **SEPTEMBER 2019:** New Computer Lab
- **DECEMBER 2019:** Renovated Basketball Court



## GYM RENOVATION

(pictured left to right) All Peoples Chairperson Seth Walworth, Executive Director Sandra Bryant, Metta World Peace and LA84 President & CEO Renata Simril.

The National Basketball Players Association (NBPA) Foundation, in partnership with the LA84 Foundation, awarded All Peoples with a \$25,000 grant to refurbish our community center basketball court. Renata Simril, President & CEO of LA84 Foundation, visited All Peoples to welcome our youth back to our After-School "Tomorrow's Leaders" Program and help surprise them with our newly renovated gym! All Peoples had the opportunity to christen the court with a Staff vs Youth basketball game.

All Peoples was awarded a **\$25K** grant to refurbish our community center basketball court

We are so grateful for the support of The National Basketball Players Association (NBPA) Foundation and the LA84 Foundation for their investment in our youth, family and community.

## REMODELED TEENS ROOM

Through the generous support of Capital One, our After-School TEENS Program room was remodeled!



**BEFORE**



**AFTER**





# FACILITY UPGRADES CONTINUED

## NEW COMPUTER LAB

All Peoples is grateful for the generous support of Women Helping Youth (W.H.Y.), who provided the funding for our new computer lab. The newly upgraded computer lab provides more learning classes for youth and families. It also provides youth better access to research for homework, school projects, online services, continuing education programs, college admissions, and job search.



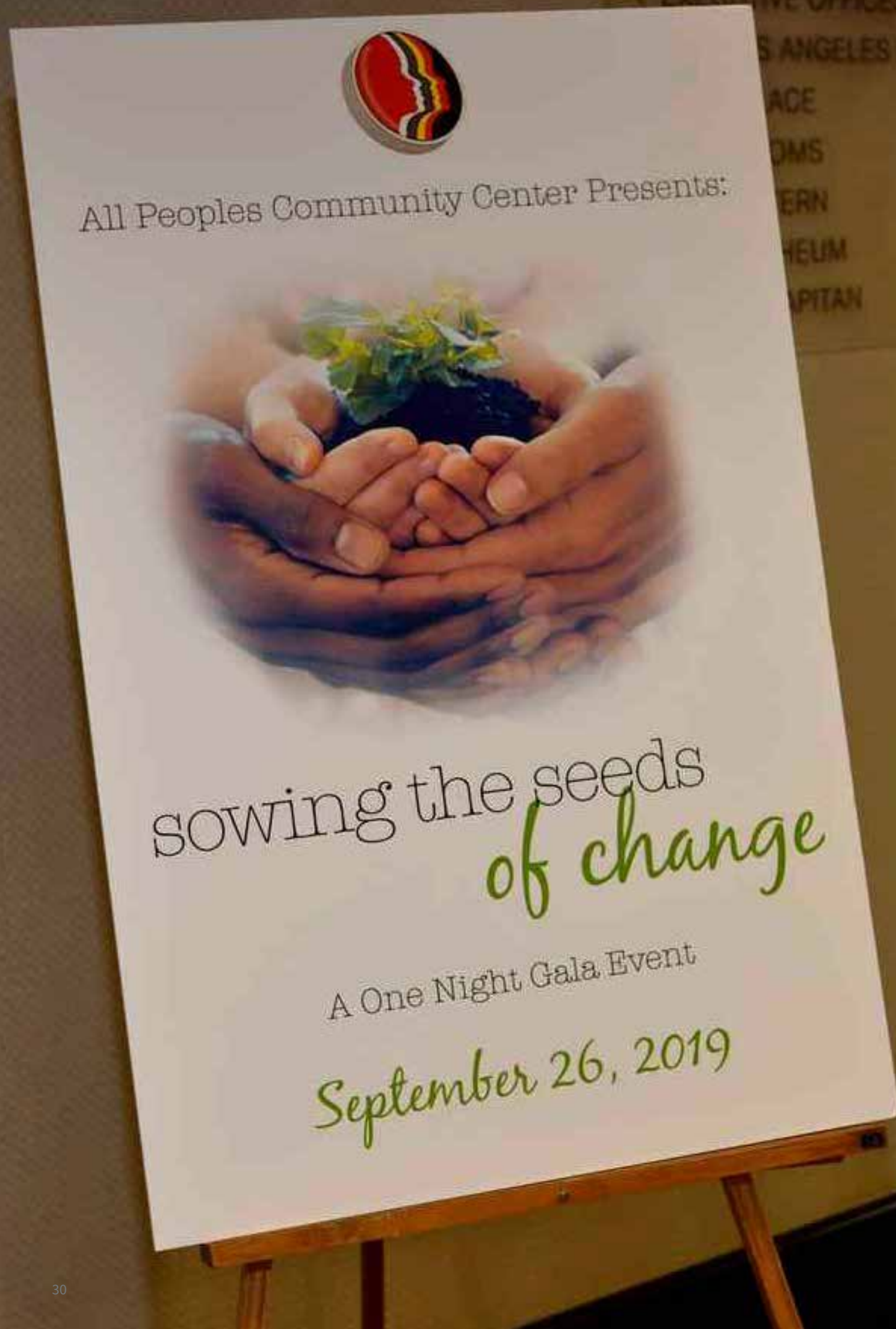
## NEW PLAYGROUND

Over 200 volunteers from All Peoples and Warner Music Group, in partnership with KaBOOM!, built a great new space for our youth to play. To witness over 200 individuals come together in support of our playground project and bring play to our South Los Angeles Vernon-Central Youth was a truly remarkable thing. We appreciate you all and enjoyed spending the day with you. Thank you for volunteering your time and service. We extend a special thank you to Warner Music Group for sponsoring our awesome new playground and helping to put smiles on the faces of all of our youth!

Over **200** individuals came together in support of our playground project to bring play to our South LA youth







# ANNUAL GALA 2019 SOWING THE SEEDS OF CHANGE

All Peoples Community Center hosted our Annual Gala "Sowing the Seeds of Change" at the Sheraton Grand. Mayor Eric Garcetti opened the evening's program with congratulatory remarks to All Peoples for 77 years of service to South Los Angeles.



Celebrating **77** years of service to our historic South Los Angeles neighborhood



Sam Joo, Director of Magnolia Community Initiative (MCI), received the Dan B. Genung Visionary Leadership Award. Pastor Eddie Anderson of McCarty Memorial Christian Church received the Joe Ide Spirit of Community Award. Four of our All Peoples youth were selected as Gerri Morgan Scholarship Fund recipients: Miguel Romero Cruz - UC Irvine, Steve Cayetano - Middlebury College, Anahi Garcia - Cal State LA, and Anthony Mendoza - UC Santa Barbara.





# ANNUAL GALA 2019 CONTINUED

We extend a special thank you to our diamond sponsor Toyota Financial Services, and to all of the sponsors and donors who made the evening a great success. Because of your commitment to enriching the lives of our South Los Angeles Community, All Peoples raised a total of \$71,535!

All Peoples raised over **\$70K** at the 2019 Annual All Peoples Gala



Joe Ide Spirit of Community Award Recipient Pastor Eddie Anderson  
(pictured left to right: Olivia Mitchell, Julio-C Ramos, Pastor Eddie Anderson and Sandra Bryant)



Oliva Mitchell, Congresswoman Roybal-Allard's representative Sinnai Avila, State Senator Holly Mitchell, and Councilmember Curren Price, Jr. acknowledged our *Gerri Morgan Scholarship Fund* recipients: Miguel Romero Cruz - UC Irvine, Steve Cayetano - Middlebury College, Anahi Garcia - Cal State LA, Anthony Mendoza - UC Santa Barbara.



SOWING THE SEEDS OF CHANGE IS OUR CHALLENGE FOR THE FUTURE LEGACY OF ALL PEOPLES. WE WILL CONTINUE TO WORK IN PARTNERSHIP WITH OUR PROGRAM PARTICIPANTS TO ADDRESS THE ISSUES THAT THEY DEEMED RELEVANT. WE WILL CONTINUE TO ENCOURAGE OUR YOUNG PEOPLE TO BELIEVE IN THEMSELVES AND NEVER GIVE UP ON THE DREAMS THEY HAVE FOR THEMSELVES, THEIR FAMILIES AND THIS COMMUNITY. REAL SOLUTIONS, REAL HEART AND REAL SERVICE IS WHO WE ARE YESTERDAY, TODAY AND IN THE FUTURE.

- SAUNDRA BRYANT, EXECUTIVE DIRECTOR





# PARTNERSHIPS & COLLABORATIONS

## PARTNERING WITH THE BEST, SO THAT OUR FAMILIES RECEIVE THE BEST

All Peoples works with several non-profits and service providers in the area to ensure that our families receive the best resources available. If clients' needs are not met through our programs, staff will refer them out to our collaborative partners. Partners also hold workshops at the Center. We would like to acknowledge and thank our collaborative partners for their dedication and commitment to our South Los Angeles Vernon-Central Community.



TOGETHER



EVERYONE



ACHIEVES



MORE

## COMMUNITY FARM

All Peoples and American Friends Service Committee's Roots for Peace celebrated the first year build-out of our community farm with a ribbon cutting. During the LA Food Policy Council's 9th Annual Food Day at LA City Hall, Roots for Peace and All Peoples were selected as Councilmember Price's Good Food Champion. Congresswoman Lucille Roybal-Allard visited All Peoples to take a tour of the Community Farm with Executive Director Sandra Bryant. The Congresswoman was able to speak with local families that are directly involved in growing produce.



## HEALTH EDUCATION

All Peoples continues its mission offering health education and referral services to residents. All Peoples was awarded a 2019 Title X Family Planning Services Program grant, impacting over 200 women and 75 youth with health and wellness through family planning education and services. All Peoples provided a 4-series sexual and reproductive health care education workshop at surrounding schools and community centers through the Faith + Community-Based Education and Outreach (FCBEO) partnership with Essential Access Health and the South Central Health Clinic.



20th Street Elementary School  
2120 Kuts  
28th Street Elementary school  
A Place Called Home  
AAA Automobile Club  
Alliance College-Ready Middle Academy 4  
Alta Public Schools  
American Friends Service Committee  
American Red Cross  
Animo Jackie Robinson High School  
Animo Jefferson Middle School  
Animo Ralph Bunch High School  
Art Active, Inc.  
Arvis Jones  
Asian American Drug Abuse Program  
Atlantic Records  
Baby2Baby  
Best Start Metro LA  
Big Sunday  
Broadway Federal Bank  
Build Health LA  
CalFresh  
California State 2nd Supervisorial District Office  
California State Assembly 59th District Office  
California State Senate 30th District Office  
California State University San Bernardino  
California's 40th Congressional District  
Capital One  
CARECEN  
CD Tech - Public Allies  
CD9 Coalition  
Carver Middle School  
Center for the Pacific Asian Families  
CHIRLA  
Children's Institute of LA  
Christian Church Disciples of Christ Pacific Southwest Region  
City of Los Angeles  
Clemente Franco  
Community Police Advisory Board-Newton Division  
CRCD – Coalition for Responsible

Community Development  
Corporation for National and Community Service - Senior Corps  
CRCD Academy High School  
CSULA  
CSUD  
CSUN  
Dr. Julian Nava Learning Academy  
Dr. Olga Mohan Alliance  
Don Shelton Memorial Classic  
Economic & WorkForce Development Department (EWDD)  
El Panon Bakery  
Esperanza Community Housing  
Essential Access Health  
Frida Khalo High School  
Guadalupana Bakery  
GS Mart  
International Institute of LA  
Inner City Arts  
John Adams Middle School  
Johnny Andrade / LA Pulse  
Julian Nava Preparatory Academy High School  
KaBoom  
LA Council District 9  
LA Mayor Eric Garcetti's Office  
La Red de Cultivadores  
LA County Department of Public and Social Services  
LA Parks and Recreation  
LA Regional Food Bank  
LAPD Newton Division  
Lift LA  
Los Angeles Community Action Team  
Los Angeles Trade-Tech Community College  
Los Angeles Unified School District  
Lucia's Discount Store  
M.E.J.O.R.  
Magnolia Community Initiative  
Marquez Meats  
Maya Angelou High School  
Mercado La Paloma  
Meta Housing Corporation  
Modern Woodmen of America

NAVA Preparatory College Academy  
Neuwirth Leadership Academy  
Nevin Avenue Elementary School  
Orthopedic Magnet High school  
OTS – California Office of Traffic Safety  
Pasadena City College  
Para Los Niños Gratts Primary Center  
Para Los Ninos Middle School  
Quantum Synergy High School  
Ricardo Macias  
Roots for Peace  
San Pedro Elementary School  
Santa Monica College  
Santee Education Complex High School  
Simply Ink  
Slate-Z  
Small Business Majority  
South LA Small Business Entrepreneurship Program  
The Kabbalah Center  
The Salvation Army LA Child Care Center  
Thomas Jefferson High School  
UCLA  
USC  
US Congress 40th Congressional District  
Vernon-Central/LATTC WorkSource Center  
Wadsworth Elementary School  
Wallis Annenberg High School  
Warner Music Group  
Watts Senior Citizen Center  
WIC  
World Harvest Food Bank



# THANK YOU DONORS & SPONSORS

## WE CONTINUE SERVING THE SOUTH LOS ANGELES COMMUNITY BECAUSE OF YOU

It is because of your generous donation that we are able to serve many families who have limited resources to help themselves. All Peoples would not be able to bring these critical services to address poverty in the community without your help. Thank you to all of the foundations, corporations and individuals that support our work. Your generous donations enable us to continue serving the South Los Angeles Vernon-Central Community with Real Solutions, Real Heart, and Real Service.

## DONORS & SPONSORS

### \$100,000 & UP

City of Los Angeles - HCID  
Weingart Foundation  
City of Los Angeles - EWDD  
Christian Church Pacific Southwest Region  
The Ahmanson Foundation  
Coalition For Responsible Community Development

### \$40,000 - \$99,999

Corporation for National and Community Service - RSVP  
International Institute of Los Angeles  
Patricia Nesbitt Foundation  
Essential Access Health  
Children's Institute, Inc.  
Western Community Housing Inc.

### \$10,000 - \$39,999

Asian American Drug Abuse, Inc.  
United Way  
Toyota Motors  
Women Helping Youth  
LA84 Foundation  
Elite Island Resorts Caribbean

The Rose Hills Foundation  
Korean Youth and Community Center, Inc.  
AMCAL Casa Figueroa Fund, L.P.  
Elks of Los Angeles Foundation  
Capital Group Co. Charitable Foundation  
All Peoples Christan Church  
National Benevolent Association  
Gesner-Johnson Foundation

### \$1,000 - \$9,999

Disciples Home Mission  
Dunbar Village LP  
FEMA  
Capital One Services, LLC  
Wallace, John & Catherine  
First Christian Church of North Hollywood  
Lark Ellen Lions Charities  
Walworth, Seth & Susan  
Davis, Nancy L.  
Makhanian, Sam & Norma E.  
Marquis, Charles K. & Cynthia F.  
Anderson, Austin & Marilyn

ECHO  
Walmart  
MUFG Union Bank, N.A  
Salter, Marilyn  
Wells, Michael T.  
Johnson, Earvin Jr  
Canon Solutions America, Inc  
Cisneros, Consuela  
Zogsports LA, LLC  
Los Angeles Homeless Services Authority  
SoCalGas  
Mouser, Sarah  
First Christian Church of Torrance  
Tolbert, Anthony J.  
Bradshaw, Charles & Mary Jo  
Staines, Barbara  
Ponce, Veronica  
Law Office of Rodney Gould  
Harper, Anton & Debra

### \$500 - \$999

Sy, Loh Jen  
Morgan, Geraldine L.  
Galligani, Christine Marie  
Carter, Denise  
Dewey, Don & Susan

Trefethen, Amanda  
Wilson, Mark  
First Christian Church Disciples Women's Fellowship  
California Credit Union  
Suzuki, Kaoru Kay  
Reed, George Thomas & Elaine M.  
Galaviz, Christina C. & William D.  
Tolbert, Anita  
Thorndyke, Judy - In Honor of Sandra Bryant  
Thompson, Kay L.  
PRP Wine International  
Osumi, Tony and Jenni  
Gutierrez, Kenneth & Mary  
Ednovate Inc.  
First Christian Church of Orange  
Orourke, Sean M  
Musick, Melvin  
Thom, Stephen N. & Rebecca  
Sundeen, Richard A. & Rosemary E.  
Synk, James  
Morgan, Arthur & Jean

First Christian Church Bakersfield  
E-Central Credit Union  
Blair, Pastor Robert

### \$200 - \$499

Morales, Roy  
Galligani, Dennis J & Jane A.  
Bryant, F. Leo & Sandra  
Yun, David  
Kenney, Patricia D. & Darell T. Weist  
Del Cid, Ana  
First Christian Church of Fullerton  
Vannoy, Janelle  
Thomas, James & Marie  
Savage, Darron  
Long, Sotello V. & Elsie D.  
Joo, Sam  
Johnson, Sheryl D.  
American Friends Service Committee  
Powell, Drew  
Valladares, Cesar & Veronica  
Membrano, Tammy  
Medina, Helen  
O'Rourke, Sean & Helen Medina  
Payuyo, Patricia

Walworth, Edward Z. & Candace C. - In Honor of Seth Walworth  
Voss, Eugene S.  
United Christian Church - Fresno, CA  
Mc Reynolds, Mary Ida

First Christian Church of Santa Barbara  
Christian Church of Northern California-Nevada  
Martin, Elizabeth  
West, Linda  
Troupe, Ronald C.  
Tokiyama, Ken & Yoshie  
Steves, Jacqueline A. & Anne J.  
Steinway, Harry  
Saito, Bruce  
Ramos, Karla  
Project Impact  
Perry, Kristal  
Moulding, Christopher T.  
Lichtman, Aviva S.

Lee, Michelle  
Lapin, Chay & Kimberly Nelson  
Kim, Thomas  
Hileman, Douglas J.  
Hardy, Valerie & Bernard L Hardy  
Golden, Jack W.  
Farmer-Perry, Claudia H  
Donaldson, Laura  
Campbell, Amanda E.

### UP TO \$199

Delgado, Miquel  
Brown, Daniel  
Walworth, Cornelia  
Harold's Car Donation Service Inc.  
Thompson, Lynn  
Zuniga, Cristina

Wormely, Linda P.  
Williams, Kristine  
Williams, Jewel  
Ummel, Vernon D. & Martha L.  
Tysen, Arthur V.  
Sugi, Richard & Ann  
Smith, Deborah L.  
Simonoff, Andrea  
Perring, Tom & Cathy  
Mill Creek Christian Church  
Masaoka, Kathy  
Limm, Lisa  
Just, Arthur  
Jones-Dix, Cheryl  
Ide, Jack  
Higuchi, Day & Charlotte  
Herod, Andrew  
Grimm, Kirsten  
Green, Theopholis  
Garcia, Jeremy  
Galligani, Daniel - In Honor of Jeremiah Jay  
Fleury, Sonia L.  
Fiddmont, Marilyn  
Faer ESQ., Laura  
DP and associates  
Creyaufmiller, Timothy & Diane  
Burke, Cecily  
Broadway Federal Bank  
Creyaufmiller, Timothy & Benitez, Amanda  
Backstrom, Mary K.  
Aguilera, Brenda  
Adams, Greg  
Ventura, Gricelda A.

Walworth, Joyce  
Backstrom, Heather  
Clover Technologies Group, LLC  
Perring, Cathy  
AT&T Employee Giving Campaign  
Trader Joe's USC  
Muteb, Uzany Y.  
Milton, J. Margaret  
Kroger Zero Hunger I Zero Waste  
Hall, Brandon  
Gulliver, Angela R  
Drob, M. E.  
DriveWise Auto  
TASC Combined Federal Campaign  
Santa Barbara Zoo  
Ase Industries  
Carter, Barbara  
Tsuji, Bill & Rhoda  
Galarza, Yahaira  
Carlock, Patricia  
Hoey, William L. & Nancy L.  
Cabrillo Marine Aquarium  
Mays, Shalanda  
Bojorquez, Virginia G.





# DONORS & SPONSORS CONTINUED

## FEATURED DONORS

### GERALDINE "GERRI" MORGAN

Geraldine “Gerri” Morgan, former secretary and RSVP advisory council, grew up in South LA and has been a member of All Peoples for more than seventy years. Gerri started what became known as the country store, where she would bake cookies and sell secondhand items. All the funds collected would go to support Camp Joe Ide.

In April 2019, All Peoples created the Geraldine Morgan Scholarship Fund in honor of her 99th Birthday. The Geraldine Morgan Scholarship Fund was established in honor of her commitment to our youth and a befitting birthday gift for 99 years of a truly remarkable life, generous and beautiful spirit. The fund will assist young people in College Corner and “Tomorrow’s Leaders” programs.



### L.A. HOST LIONS CLUB/LARK ELLEN FOUNDATION

In 1956, Pico Robinson Lions Club President Bob Brunner gave his first donation of a tricycle, two wagons and a Christmas tree for the children at All Peoples. While the Pico Robertson Lions Club no longer exists, beginning in 1987 All Peoples was adopted by the L.A. Host Lions Club, and they have continued to support our youth annually through the Lark Ellen Foundation. The L.A. Host Lions Club also provides vision screenings at our Annual All Peoples Health Fair.





# A NOTE FROM OUR BOARD CHAIR



On behalf of the Board of Directors, I want to thank you for your deeply appreciated support of All Peoples Community Center. While this annual report is for 2019, I want to take this opportunity and use this space to highlight our important accomplishments since March 2020. It has, of course, been a very challenging year, but I am pleased to report that All Peoples has stepped up and delivered. As we always have throughout a proud history of service, through many difficult times, starting in 1942 when we helped heal a neighborhood torn by the internment of its citizens and continuing through the COVID-19 pandemic today, with the steady hand and opportunity we provide for our resilient community.

All Peoples has always delivered a wide range of critical services to our hard-working neighbors. Still, this year we were officially and very appropriately deemed essential, tasked since March by the City of Los Angeles, to remain open and provide essential COVID-19 services. This put our resourceful, courageous, efficient staff of 35 squarely on the frontlines – all hands on deck – to adapt, figure things out, and make stuff happen.

They did all this and more, led by Sandra Bryant, our remarkable and gifted Executive Director, in her 37th year of tireless service to the community

where she was born and to the institution where she spent much of her childhood. Sandra and the team turned on a dime, creating a safe environment at our E. 20th Street location and provided food, cash cards, protective goods, and advisory services to thousands struggling with job loss, rent payments, and extreme anxiety.

Thanks to you - our generous funders, partners, and volunteers - All Peoples will get through this. The COVID-19 pandemic may have changed things in so many ways, but the silver lining for All Peoples is that it has made us work smarter, leaner, and better than ever, always focused on our core mission of making the American Dream possible for a deserving and underserved community.

We are grateful to all of you for sustaining this special organization with its extraordinary narrative, spanning several generations and neighborhood transformations from Japanese-American to African-American to Latino. Thanks to you, All Peoples anchors an important corner of this great city, serving everyone who walks through the door.

Respectfully,  
Seth Walworth  
Board Chair



IT HAS BEEN A VERY CHALLENGING YEAR, BUT I AM PLEASED TO REPORT THAT ALL PEOPLES HAS STEPPED UP AND DELIVERED.

- SETH WALWORTH, BOARD CHAIR

## BOARD OF DIRECTORS



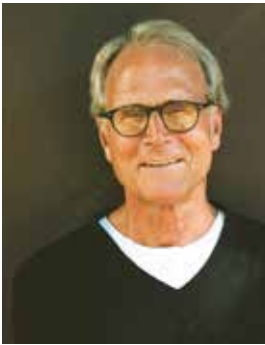
**SETH WALWORTH**

*Chairperson*  
Manager  
Sales Operations  
Sales Executive



**AMANDA TREFETHEN**

*Vice Chairperson*  
Attorney, College Professor  
California State University,  
Long Beach



**HARRY STEINWAY**

*Treasurer*  
Retired CFO



**CHRISTINE GALLIGANI**

*Secretary*  
Director of Operations  
Nexo Insurance Services, Inc.



**ROBERT BLAIR**

*Director*  
Pastor  
All Peoples Christian Church



**DAVID CRISTALES**

*Director*  
Data Solutions  
Capital Group



**DON DEWEY**

*Director*  
Co-Regional Minister  
Disciples of Christ Pacific  
Southwest



**BRANDON HALL**

*Director*  
Solutions Engineer  
Capital Group



**KARLA RAMOS**

*Director*  
Operations Manager  
Golden Boy Productions, Inc.



**JOEY SHANAHAN**

*Director*  
Development Director / COO  
Cancer Support Community  
Redondo Beach



**LYNN THOMPSON**

*Director*  
Retired Educator  
L.A.U.S.D.



**JOHN WALLACE**

*Director*  
Professor  
Cal Poly Pomona



# READY TO GET INVOLVED?

All Peoples Community Center depends on its generous donors, selfless volunteers, amazing staff, dedicated Board of Directors, community partners and mentors.

## THERE ARE MANY WAYS TO GET INVOLVED

### VOLUNTEERS ARE AN INTEGRAL PART OF OUR TEAM

All Peoples Community Center is currently looking for volunteers to assist with various activities around the center. Volunteers are an integral part of our Team. From our food program to tutoring to community events, there are many ways you can become involved!



TO VOLUNTEER, PLEASE VISIT:  
[ALLPEOPLES.CC.ORG/VOLUNTEERING](https://allpeoplescc.org/volunteering)

### DONATIONS HELP WITH NECESSARY SUPPLIES, EQUIPMENT AND SERVICES

Your one-time or monthly donation allows us to purchase supplies, equipment and services that help our community.



TEXT **ALLPEOPLES**  
TO **44321 TO DONATE**



YOU CAN ALSO DONATE AT:  
[ALLPEOPLES.CC.ORG/DONATE](https://allpeoplescc.org/donate)



MAKE CHECKS PAYABLE TO:  
**ALL PEOPLES COMMUNITY CENTER**  
**822 E 20TH STREET, LOS ANGELES, CA 90011**

On behalf of the All Peoples staff, the Board of Directors, and the wonderful community that we serve, we want to thank you for your generous support of All Peoples Community Center. We would not be able to bring resources to the South Los Angeles Vernon-Central Community without YOU. Thank you for volunteering your time and providing financial assistance to help empower our youth, families, and community members!

*All Peoples is a 501(c)(3) not-for-profit, non-sectarian, multi-service agency; tax identification number 95-2669400.*

# 2020-2021 A LOOK AHEAD



For 78 years, All Peoples has had first-hand experience on the front lines of disaster relief from the 1965 Watts Riots, the 1987 Northridge Earthquake, and the 1992 Civil Unrest. All Peoples FamilySource Center has been tasked by Mayor Eric Garcetti to deliver “essential services” during the COVID-19 crisis. Our doors have remained open throughout the pandemic.



All Peoples is providing COVID-19 hunger relief for families. Families seeking food through our Supplemental Food Program has tripled since March 2020. Staff is providing individuals and families with food, diapers, grocery cards, Angelino cards, cleaning products, essentials and more. Programming has been transferred to online platforms such as Zoom.

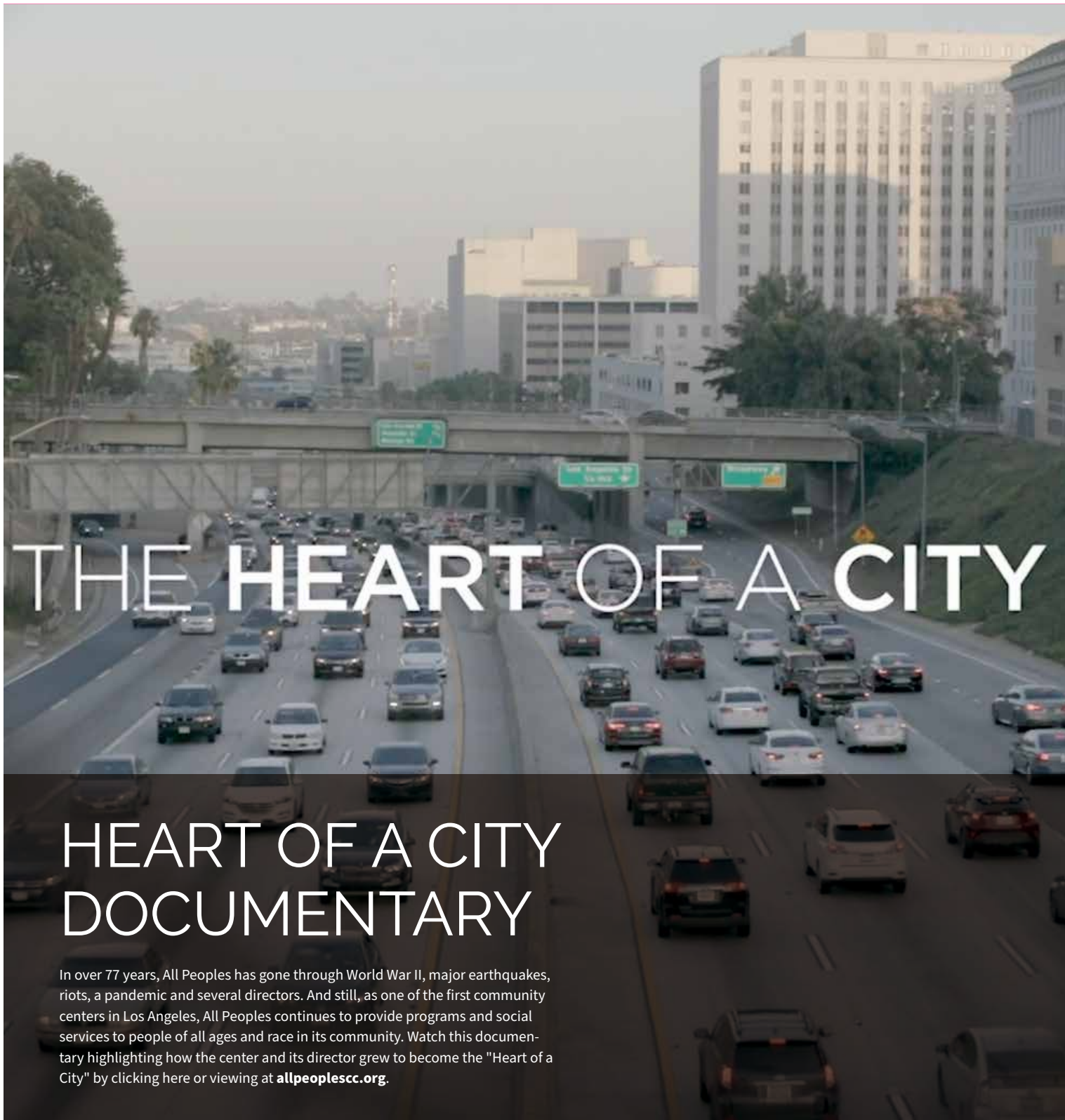
All Peoples After-School “Tomorrow’s Leaders” Program is focusing on learning loss prevention for youth. 26% of students lack computers at home and nearly half lack high-speed internet (LAUSD, May 18, 2020). Youth Staff have developed programming to leverage the digital divide for low-income South Los Angeles youth.



NOW IS A TIME OF REFLECTION, INNOVATION, AND ACTIONS THAT WARRANT A NEW FOCUS AND REIMAGINING THE WORK OF THE CENTER. EACH DAY, WE MUST ENDEAVOR TO PROVIDE QUALITY SERVICE TO THE YOUTH AND ADULTS WHO ENTER OUR DOORS. REAL SOLUTIONS, REAL HEART AND REAL SERVICE IS WHO WE ARE YESTERDAY, TODAY AND IN THE FUTURE.

- SAUNDRA BRYANT, EXECUTIVE DIRECTOR





# THE HEART OF A CITY

## HEART OF A CITY DOCUMENTARY

In over 77 years, All Peoples has gone through World War II, major earthquakes, riots, a pandemic and several directors. And still, as one of the first community centers in Los Angeles, All Peoples continues to provide programs and social services to people of all ages and race in its community. Watch this documentary highlighting how the center and its director grew to become the "Heart of a City" by clicking here or viewing at [allpeoplescc.org](http://allpeoplescc.org).

822 E. 20th St.  
Los Angeles, CA 90011  
Phone: (213) 747-6357  
Fax: (213) 747-0541  
Email: [allpeoples@allpeoplescc.org](mailto:allpeoples@allpeoplescc.org)

Follow us on social media:



[/allpeoplescc](https://www.facebook.com/allpeoplescc)



[/allpeoplesla](https://www.instagram.com/allpeoplesla)



All Peoples  
Community  
Center



All Peoples  
Community  
Center



**ALL PEOPLES**  
COMMUNITY CENTER

[WWW.ALLPEOPLESCC.ORG](http://WWW.ALLPEOPLESCC.ORG)

Tax ID: 95-2669400